

50 M|P|W

Birmingham Prospectus

2023/2024

Tailored, *not uniform*
www.mpw.ac.uk





About the College

MPW Birmingham is a co-educational fifth- and sixth-form college accepting up to 250 students each year. We offer intensive, small-group tuition in a socially relaxed yet academically rigorous environment.

MPW Birmingham is part of the MPW group of colleges founded in London in 1973. The college is located in Edgbaston Village, only a few minutes from the city centre and the University of Birmingham. It was opened in 1980 and is the only college of its kind in the West Midlands.

MPW relocated to larger, newly refurbished premises in 2006 and the site was substantially extended again both in 2015 and 2018. The college now boasts greatly enhanced facilities to meet all the needs of our expanding student base.

No student is accepted without attending an interview, the initial purpose of which is to provide parents and students with the best educational advice. If we feel that it is appropriate to offer a place at MPW, every effort is made during the interview to identify the right

programme and options, often by means of detailed discussion with individual subject tutors.

Once a student has been accepted at MPW, our aim is to provide the most effective possible preparation for the specific examinations that he or she will be taking. Our method is based on intensive tuition in small groups, close personal monitoring of academic progress and regular exam practice. We insist on strict punctuality in the attendance of lessons and the submission of homework but are otherwise free of many of the school rules that today's students find restrictive.

Our reputation is based on having created a college in which students can enjoy working hard. The environment is friendly and informal, the tutors experienced and enthusiastic and the atmosphere positive and conducive to success.

“ Teaching staff are knowledgeable and highly dedicated to ensuring pupils’ outcomes are the best they can be. ”

Ofsted Inspection Report 2018

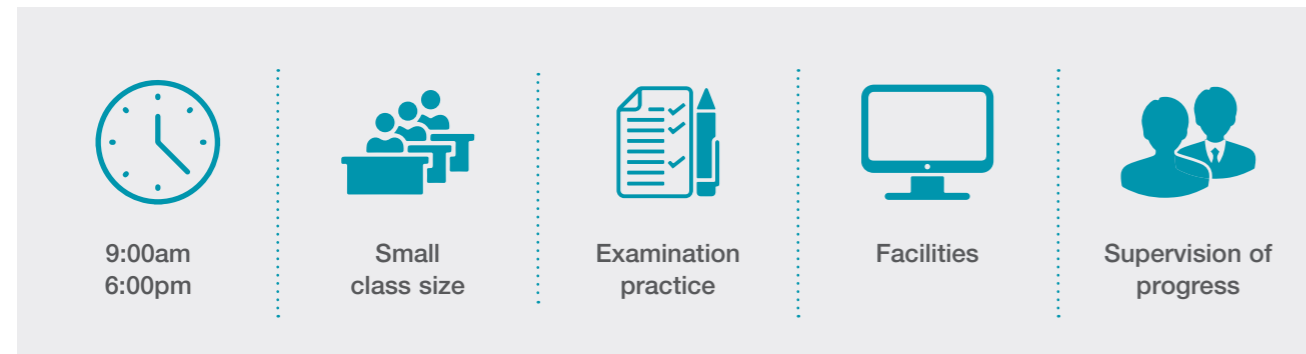
College Inspections

The college is registered as an independent school with the Department for Education and as such is subject to regular inspections by Ofsted (Office for Standards in Education) and the Independent Schools Inspectorate. The college is currently rated by Ofsted as Outstanding in all assessment areas. Copies of our inspection reports are available on our website.



Our Method

Our small class sizes ensure intensive, interactive work and provide optimum conditions for individual progress and success.



Tuition

We have a staff of highly qualified tutors, the majority of whom have several years' teaching experience at the college. Tuition takes place between the hours of 9.00 am and 6.00 pm on weekdays. MPW produces its own study materials in all major subjects and members of staff are available outside of class time to provide help on an individual surgery basis. This time is used for clarification of subject material and help with timed assignments or past examination papers.

It is a fundamental principle at MPW that there are always fewer than 10 students in any one class. With these group sizes it is possible to combine a stimulating classroom atmosphere with the close individual attention that each student requires. Tuition is focused on the precise demands of the final examination and particular attention is paid to exam technique.

Examination Practice

A level students are required to complete a weekly timed assignment in each of their subjects. Timed assignments are usually of one hour's duration and are designed to test the understanding of work covered during the previous week. These are supplemented by regular, more substantial revision tests, the purpose of which is to ensure that revision is continuous and cumulative over the duration of the course. Full mock exams are held before all external examinations.

We place considerable emphasis on regular testing under timed conditions, which we find plays a major part in building students' confidence and motivation. All timed assignments, revision tests and mock examinations take place under supervised exam conditions. The Study Centre is operated as a mock examination centre and is fully supervised from 9.00 am to 6.00 pm every day during term time.

Facilities

A state of the art VLE and a full range of modern resources and facilities supports and enriches students' learning, promoting higher levels of achievement. There are dedicated laboratories for Biology, Chemistry and Physics, all finished to the highest specification. There is an Art Studio, Internet Library and ICT Suite, each of which offers optimal conditions for learning. All classrooms are internet-enabled and interactive whiteboard technology is available across the full range of subjects.

The Study Centre maintains a comprehensive selection of past examination papers and the Learning Resource Centre holds relevant subject journals and university prospectuses. Students have access to computers throughout the day in the Study Centre and the Learning Resource Centre. Our spacious, purpose-built student common room is the main hub of social activity outside the classroom and provides an area both for refreshments and relaxation.

Supervision of Progress

MPW's Personal Tutor system provides close, friendly and constructive monitoring of students' progress. The Personal Tutors are readily accessible to parents and hold regular individual meetings with their students to discuss academic progress, degree applications and general welfare. A large proportion of the Personal Tutors' time is devoted solely to this important function. Students' attendance and punctuality are monitored closely.

Our work schedule is demanding and parental support is vital to any student's success. We encourage parents to discuss progress with us at any time. Written reports are sent to parents twice in the Autumn and Spring terms and once in the Summer term. The reports provide information on general progress, timed assignment results and suggestions for short-term action. Reports are discussed with students in review meetings at which students and Personal Tutors together agree formal targets for development during the following half term.

“Exceptional leadership and management have ensured that the school has maintained and further improved its outstanding provision.”

Ofsted Inspection Report 2018



University Guidance

The clear aim of the majority of our students is to proceed to a university degree course after leaving MPW. A key part of the Personal Tutors' role is to provide the help and guidance necessary to make the most appropriate choices of course and institution.

Degree Applications

For students in the lower sixth the process of applying to university begins in the Autumn and Spring terms with weekly sessions to prepare them for choosing courses and writing personal statements. It culminates in a two-week university support programme at the end of the Summer term. We are in favour of early applications for all courses in Higher Education and advisory discussions start in earnest at the first possible stage, normally during the initial student interview.

MPW Birmingham has built up considerable expertise in supporting students applying for some of the more competitive courses such as Medicine, Dentistry and

Veterinary Science. This support extends to university selection, help with structuring the personal statement, interview practice and preparation for the UCAT, BMAT and other pre-admissions tests. Speakers ranging from university admissions tutors to gap-year students visit the college each year to give advice on the universities and departments that students from MPW have attended in the past.



“Students are exceptionally well prepared for life at university through the personal and social education curriculum and the ethos of the school, which encourages self-reliance and individual responsibility.”

Ofsted Inspection Report 2018

MPW Guides

Our experience of university admissions has led to the publication of a series of MPW Guides on Higher Education. These guides cover general entrance procedures, admission to Oxford and Cambridge and admission to degree courses such as Medicine, Dentistry, Pharmacy and Pharmacology, Veterinary Science, Physiotherapy, Business and Management, Psychology and Law. MPW Guides and our mock interview service are used not only by our own students but also by pupils from a wide variety of other schools.

Citizenship Scheme

We believe that to be truly successful in life our students not only require good exam results but should also display initiative, hard work, possess outstanding communication skills and approach life in a positive, courteous and purposeful manner. All students at MPW join our unique Citizenship Scheme. We would expect students who achieve the MPW Citizenship Award to have shown a willingness to accept responsibility for their actions, to have contributed constructively to life at MPW and have engaged in some type of voluntary work outside MPW. In our experience involvement in schemes such as this significantly enhances students' university and career prospects.

Sport and Extra-curricular Activities

MPW students enjoy access to the sports facilities at a local university. The most popular sporting activities are badminton, basketball, football, cricket, netball and general fitness training. MPW has an established football team which plays matches against other colleges. We run a popular debating society and our students participate annually in a Model United Nations conference. Our students may also take part in the Duke of Edinburgh Scheme and become involved in charity work with charities such as Challenge and Envision. We make the most of our central Birmingham location with excursions to the Magistrates' Courts, Botanical Gardens, Planetarium, art galleries and museums. There are activities with travel further afield, including overseas study tours, theatre trips to London and Stratford-upon-Avon, field trips to Wales and History excursions around the country.



A level at MPW

A level study at MPW is characterised by choice and specialisation. Subject choice is informed by the career aspirations of the individual student and by our personalised higher education guidance.

Two-Year A level Courses

Most A level students at MPW study a two-year A level programme. These courses are designed for students who are continuing at MPW after GCSE or for students from other schools who are seeking a change of environment after the fifth form.

In common with most schools in the independent sector, the majority of students joining us in the lower sixth study three subjects at A level and may undertake an Extended Project Qualification (EPQ). This programme enables students to follow a broad and balanced academic curriculum combined with the opportunity of developing in-depth study and research skills.

An increasing number of students also join MPW at the end of Year 12 either to complete the studies that they have started at their previous schools or to change direction with a new approach or a new set of subjects. Depending on prior academic attainment, this may mean transferring into the upper sixth or restarting in Year 12 at MPW.

One-Year A level Courses

These self-contained courses cover the complete specification in one year and are run entirely separately from the second year of our two-year programme.

One-year courses are designed for students with previous experience of A level work and include the option of students taking up a new subject that may not have been available at school, often allowing them to rethink their UCAS options in a fresh and constructive manner.

Retake A level Courses

At MPW there are two main course duration and start date options for retake students at A level. The choice between these options often depends on previous grades, university aspirations and gap year plans.

Our September to June course suits those students who require thorough revision of all papers, often over more than one subject. It is no longer possible to retake a subset of papers that contribute to the overall grade and the full-year course is usually the safest and most effective means of securing a significant improvement.

The other main option is the January to June short retake course which may suit those who have narrowly missed their target grade, who perhaps have gap-year activities such as work experience or travel plans during the Autumn term and whose new UCAS application does not need to reference the academic progress made during a retake course. It is essential to discuss the various short retake options carefully at interview.

Oxbridge Entrance

Our Oxbridge preparation programmes are focused on preparation for the Oxbridge aptitude tests, on the interview, on the candidate's wider reading and on the short written tests that are often set at the time of interview. We offer two mock interviews per candidate with a detailed written report sent to the student after the first interview. The second interview provides students with the opportunity of putting into practice lessons learnt from the first. Where appropriate, we also offer specialist extension tuition for Oxbridge candidates in individual subjects.

“Students in the sixth form are extremely positive about the quality of teaching in the school. They appreciate the one-to-one support that is available when extra levels of challenge are required.”

Ofsted Inspection Report 2018





“Pupils have extremely positive attitudes to learning due to the high quality of teaching and individual support they receive. They work hard and are determined to succeed. Behaviour in lessons and around the school is exemplary.”

Ofsted Inspection Report 2018

GCSE at MPW

Our GCSE curriculum is specifically tailored to meet individual needs and provides a firm foundation for success at A level. Work done in the classroom is supplemented by a wide range of out of class activities designed to bring school work into the context of everyday life.

Two-Year and One-Year Courses

Our GCSE core curriculum programme allows those who wish to transfer to MPW at the beginning of Year 10 or Year 11 to do so with the minimum of disruption to their studies. The two-year course is a fully integrated programme covering the requirements of the National Curriculum. These include English, Mathematics, Computer Science, Modern Languages and Sciences. Students may take up to 10 subjects. Students taking one-year GCSE courses receive more hours of tuition per subject, thus placing a lower limit on the maximum number of subjects that may be taken.

Students who are under 16 at the beginning of the school year are expected to be full-time. Students in this age group are required to participate in a wider range of activities than their older counterparts. In addition to the academic timetable, all students are supported by a PSHE programme that encourages them to understand their role in society and uphold the values of freedom, tolerance and respecting the rule of law. The PSHE programme also covers personal well-being, healthy relationships, personal finance, careers education, current affairs and general studies.

GCSE students take part in a range of indoor and outdoor sports activities in which they are able to mix with A level students in a supervised environment. Many of the GCSE students are members of the college's sports teams. GCSE students are given the opportunity of studying a creative subject and of participating in the college enrichment clubs so that they may explore areas such as photography and film.

Short Retake GCSE Courses

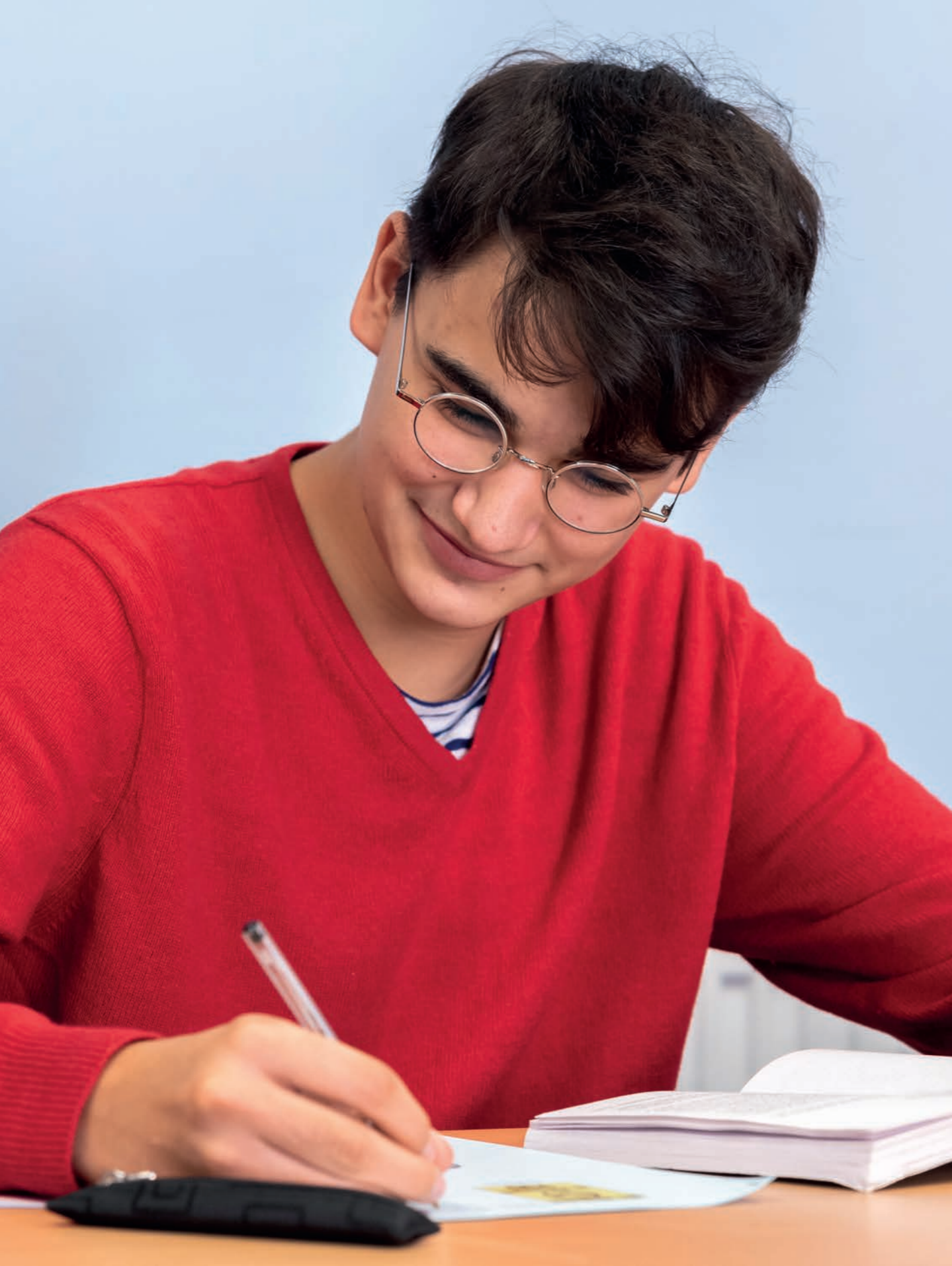
We run short retake courses for students who have narrowly missed the pass grade equivalent in English Language or Mathematics. Assessed coursework may either be improved and resubmitted or, where desirable and permitted by the examining boards, we can arrange for assessments made by other schools to be carried over.

Student Supervision at GCSE

The relationship between the student and the Head of GCSE is a particularly important one at MPW. Students need access to a specialist who has a detailed overview of their strengths and weaknesses and of the demands placed upon them by the various subjects. The Head of GCSE holds regular individual meetings with each student and is the main point of contact with parents.

“The principal and the senior leadership team are ambitious for their pupils. Their collective experience and expertise ensure that the school benefits from leadership and management of the highest quality.”

Ofsted Inspection Report 2018



MPW Prize Winners

Each year MPW awards a number of prizes in recognition of academic achievement. The roll of honour for our 2022 prize winners was as follows:

NOK YIN (ALVIN) CHIU won the Outstanding Academic Achievement Award. Alvin joined MPW from Hong Kong for our two-year A level course in Biology, Chemistry, Mathematics and Physics. He achieved grades A*A*A*A*, meeting his conditional offer from the University of Cambridge to read Medicine. Alvin decided instead to pursue his university studies in Hong Kong.

HOI CHING (TRACY) LEUNG won the Principal's Award for outstanding contribution to college life. Tracy joined MPW from Hong Kong for our two-year A level course in Accounting, Chinese, Economics, Mathematics and Further Mathematics. She achieved grades AA*AA*A* and won a place to read Economics at the University of Warwick.

SURESH SANJAY won the MPW Medical Sciences Award. Suresh joined MPW from King Edward VI Camp Hill School for Boys, where he had achieved ABC in Religious Studies, Biology and Chemistry. He retook Biology and Chemistry over one year, achieving grades A*A and won a place to read Medicine at the University of Liverpool.

KIAN MOORE won the MPW Dentistry Award. Kian joined MPW from Solihull School for our two-year A level course in Biology, Business and Chemistry. He achieved grades AAA and won a place to read Dentistry at the University of Valencia.

AMANDA ABBA won the Isobel Cater Memorial Award for History. Amanda joined MPW from Nigeria for our two-year A level course in English Literature, History and Politics. She achieved grades ABA* and won a place to read Politics and International Relations at Queen Mary University of London.

AISHA ABBAS JEGA won the MPW Science Award. Aisha joined MPW from Nigeria for our two-year A level course in Biology, Chemistry and Physics. She achieved grades A*AA and won a place to read Medicine at the University of Uskudar in Istanbul, Turkey.

KANE ENDLEY won the MPW A level Retake Award. Kane joined MPW from Arden School, where he had obtained grades DDD in Biology, Chemistry and Mathematics. He retook all three subjects over one year and achieved grades BBA. Kane won a place to read Bio-veterinary Science at the University of Liverpool.

FINBAR (FIN) COWAN won the Nikul Patel Memorial Prize for Mathematics. Fin joined MPW from Bristol Grammar School, where he had obtained grades DDE in Physics, Mathematics and Computer Science. He retook Mathematics and Physics alongside Further Mathematics as a new subject over one year and achieved grades A*AA. Fin won a place to read Mathematics at the University of Manchester.

NOEMIE MENEDOU DJONGO won the NCUK Award. Noemie joined MPW from the American School of Douala, Cameroon to study on this nationally accredited university foundation programme. She achieved grades A*A*A*A* in the final examinations and won a place to read Medicine at the University of Central Lancashire.

JASMINE OBERHEIM won the Lower Sixth Prize. Jasmine joined MPW from Twycross House School for our two-year A level course in Biology, History and Religious Studies. She achieved outstanding scores in all her subjects in the end of year internal examinations.

VARVARA (BARBARA) SOKOL won the EPQ (Extended Project Qualification) Award. Barbara joined MPW from Columbia International College in Canada for our two-year A level course in History, Mathematics and Politics. At the end of the lower-sixth year she completed an EPQ on the role of political elites in different countries for which she achieved an A* grade.

HSUAN-CHU (SHARON) LIAO won the GCSE Award. Sharon joined MPW from Taiwan for our one-year GCSE course. She achieved grades 9,9,9,9,8,8 and is now taking A levels at d'Overbroeck's College in Oxford.



Subjects Taught at MPW

Subjects	A level	GCSE
Accounting	●	
Art*	●	●
Art and Design		●
Biology	●	●
Business	●	●
Chemistry	●	●
Chinese	●	
Computer Science*	●	●
Digital Photography	●	
Economics	●	
English Language	●	●
English Literature	●	●
Film Studies	●	
French	●	●
Further Mathematics	●	
Geography	●	●

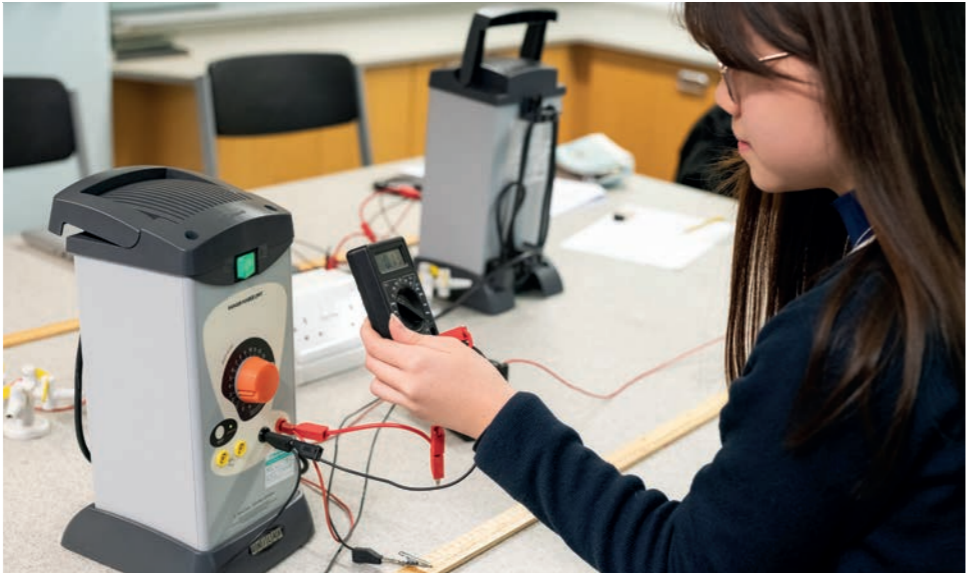
Subjects	A level	GCSE
German	●	●
Government and Politics	●	
History	●	●
Mathematics	●	●
Media Studies	●	●
Music	●	
Photography		●
Physics	●	●
Psychology	●	●
Religious Studies	●	●
Sociology	●	
Spanish	●	

**Students choose between GCSE Art and GCSE Computer Science. Other subjects may be available from time to time.*



“ Strong and respectful relationships between students and staff ensure that classrooms are productive places. The teaching of small groups of pupils allow teachers to plan and deliver individualised learning which has an excellent impact on progress. ”

Ofsted Inspection Report 2018



Staff at MPW

Principal

MARK SHINGLETON read International Business and French at the University of Westminster before obtaining a PGCE and an MA in Educational Leadership at the Institute of Education. He was Pastoral Director at Saint Charles Sixth Form College in London and Head of Sixth Form at Cokethorpe School in Oxfordshire before taking over as Principal of MPW Birmingham in 2009.

Vice Principals

ADAM CROSS read Biological Sciences at Lancaster University before completing a post-graduate degree in Education. He joined MPW in 2003, becoming Head of Science in 2005 and Vice Principal in 2010. As well as teaching Biology, Adam is the author of MPW's *Getting into Dental School*.

JAMES BOURNE read Illustration at the University of Plymouth and joined MPW in 2006. James continues to be involved in various community-based Art projects in the West Midlands. His work has been exhibited nationally including at Somerset House and the Old Truman Brewery in London. James serves both as a Vice Principal and as the college's Head of GCSE.

RYAN MORAN read Business and Accountancy and took his PGCE at Birmingham City University. He joined MPW in 2013 and also holds the positions of International Student Officer and Director of Student Enrichment.

Director of Teaching and Learning

AARON GHUMAN read Chemistry at the University of Sheffield before going on to work in the pharmaceutical sector before joining MPW in 2019.

Director of Learning Support

REBECCA ORMSTON read Zoology at Bangor University then worked in conservation before joining MPW in 2018.

Registrar

SALLY COOPER read Business Studies at the University of Central England. Prior to joining MPW in 1997 she served with the Women's Royal Naval Service and held senior administrative roles in several large companies.

Teaching Staff and Subjects Taught

TAUHEED ARIF	BA	Economics, Business
JAMES ASHLEY	BSc	Biology
NIGEL BAKER	BSc, PhD	Biology, Chemistry
BEN BLACKFORD	BSc	Computer Science
JAMES BOURNE*	BA, PGCE	Art
REBECCA BOWLEY	BA, PGCE	History
BEN CHETTER	BSc, MRes	Chemistry
ADAM CROSS	BSc, MEd	Biology
STACEY DAVIS	BA	Religious Studies
YOLANDA DE LLANO ARIAS	BA	Spanish
MYA DONALDSON	BSc	Chemistry, Biology
AISHA ELLAHI	BA	Politics
AARON GHUMAN*	BSc	Chemistry
MARIANA GONZALEZ	BA, MEd	Spanish
MATHEW HAMMOND	BA	Media Studies, Photography
CHARLES HARRY	BSc, ALAM	English, French, German
BRODERICK HARVEY	Bs MSc	Physics, Mathematics
ROBIN HATTER	BSc	Mathematics
KEVIN HILLIER	BSc	Mathematics, Physics
MARIANNE HUGHES	BSc, MA	Psychology
ISMAEEL JAVID	BA	Accounting, Business
AISHA KALSOOM	BSc	Biology
JESSICA MASON	BSc, MSc	Biology
PEI MCKENSIE	BA, MA	Chinese
RUSSELL MIDDLETON	BA, PGCE	Media Studies, Film Studies
MARIANNE MINCER	BA, MA	English
AKIF MOHIT	BSc, MSc	Mathematics
RYAN MORAN	BA, PGCE	Business
REBECCA ORMSTON*	BSc	Geography
OMAR QURESHI	MSc, PhD	Mathematics
PATRICIA ROBINSON	BA	French, English, IELTS
ZOE SNEE	BA	Sociology, History
SOPHIE STEWART	BA, PGCE, MA, DELTA	English, IELTS
AWAIS TARIQ	BA	Economics, Business
LAURET TIPPING	BSc, MSc	Physics
ANDY VANEK	BSc	Mathematics
JULIE WALKER	BA, PGCE, TEFLA	English, IELTS

*Head of Faculty



Supplementary Tuition and Easter Revision

MPW runs a number of courses for students at other schools and colleges. These usually take place in the holidays, the evenings or on Saturday mornings.

Supplementary Tuition

We run a busy after-hours tuition programme tailored to the individual needs of A level and GCSE students. Tuition is also provided at pre-GCSE level in Mathematics, English and in verbal and non-verbal reasoning for school entrance examinations.

All tuition takes place on the college premises. We do not provide home tuition. Lessons normally take place between 4.30 pm and 6.30 pm, Monday to Friday. Tutorials last for one hour or one and a half hours. Many of our tutors are experienced examiners; all are enthusiastic about their subject areas and experienced in teaching a variety of syllabuses.

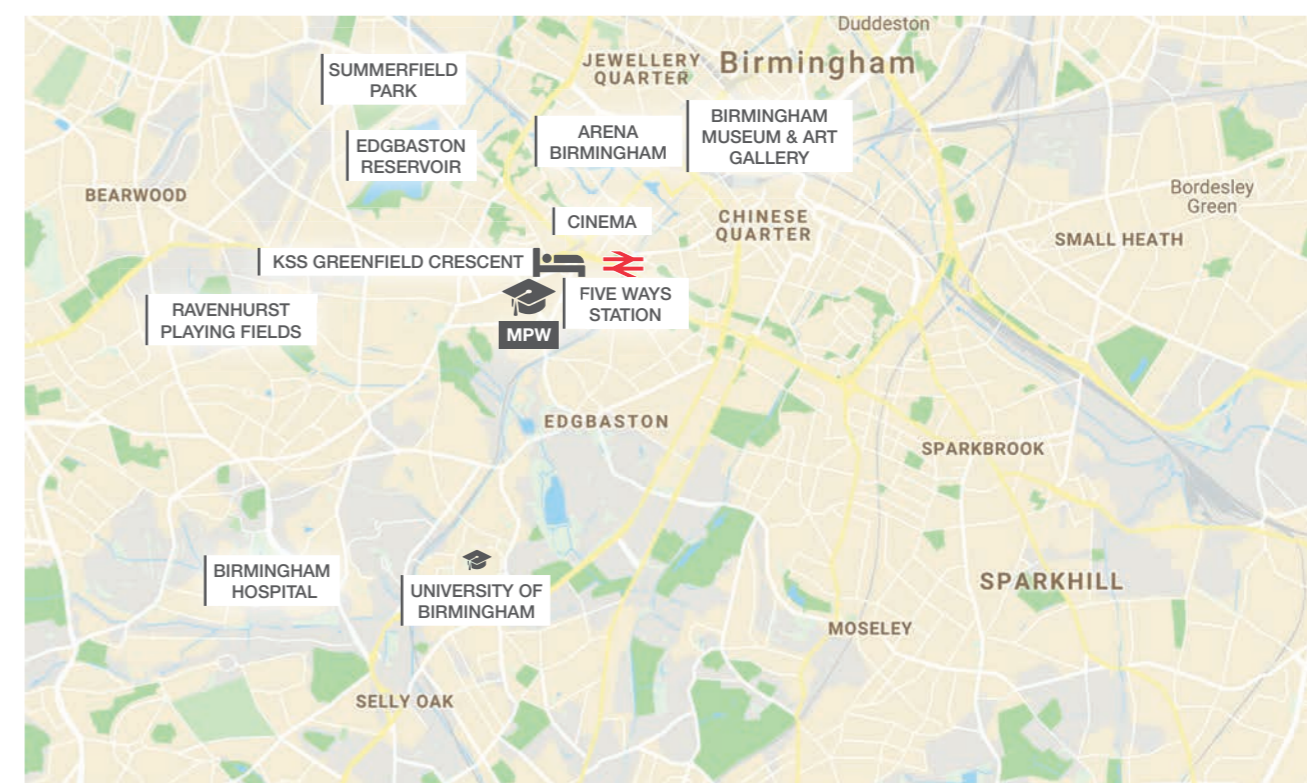
Saturday Tuition

MPW offers Saturday morning tuition between the hours of 9.00 am and 1.00 pm when pupils from outside MPW have the opportunity of covering core topics and practising exam technique. Our team of tutors offer tuition in pre-GCSE, GCSE and A level courses and are familiar with all exam boards. Pupils are expected to attend a minimum of six hours' tuition in each subject that they study. Further details may be obtained from the college Reception. Most Saturday pupils study Mathematics, Sciences or English but other subjects are available on request.

Easter Revision

Intensive A level and GCSE revision courses are organised during the Easter holidays. These courses are self-contained and include thorough revision of core topics, guided practice of examination questions and improvement of study and revision skills. Students may register for one-week courses that cover an entire subject specification or for individual day or half-day modules.

At the end of each course students receive guidance and suggestions for further improvement so that a step-by-step plan of immediate action is in place before the examinations. Separate course outlines are provided for each subject.



MPW Birmingham is situated on Greenfield Crescent in Edgbaston Village. The college is a short walk from Five Ways train station and is easily accessible via the M5, M6 or M42. Our proximity to the city centre and the University of Birmingham campus allow our students access to the full range of world class facilities that Birmingham has to offer.



BIRMINGHAM **0121 454 9637**
16-18 Greenfield Crescent
Birmingham B15 3AU

birmingham@mpw.ac.uk

LONDON **020 7835 1355**
90-92 Queen's Gate
London SW7 5AB

london@mpw.ac.uk

CAMBRIDGE **01223 350158**
3-4 Brookside
Cambridge CB2 1JE

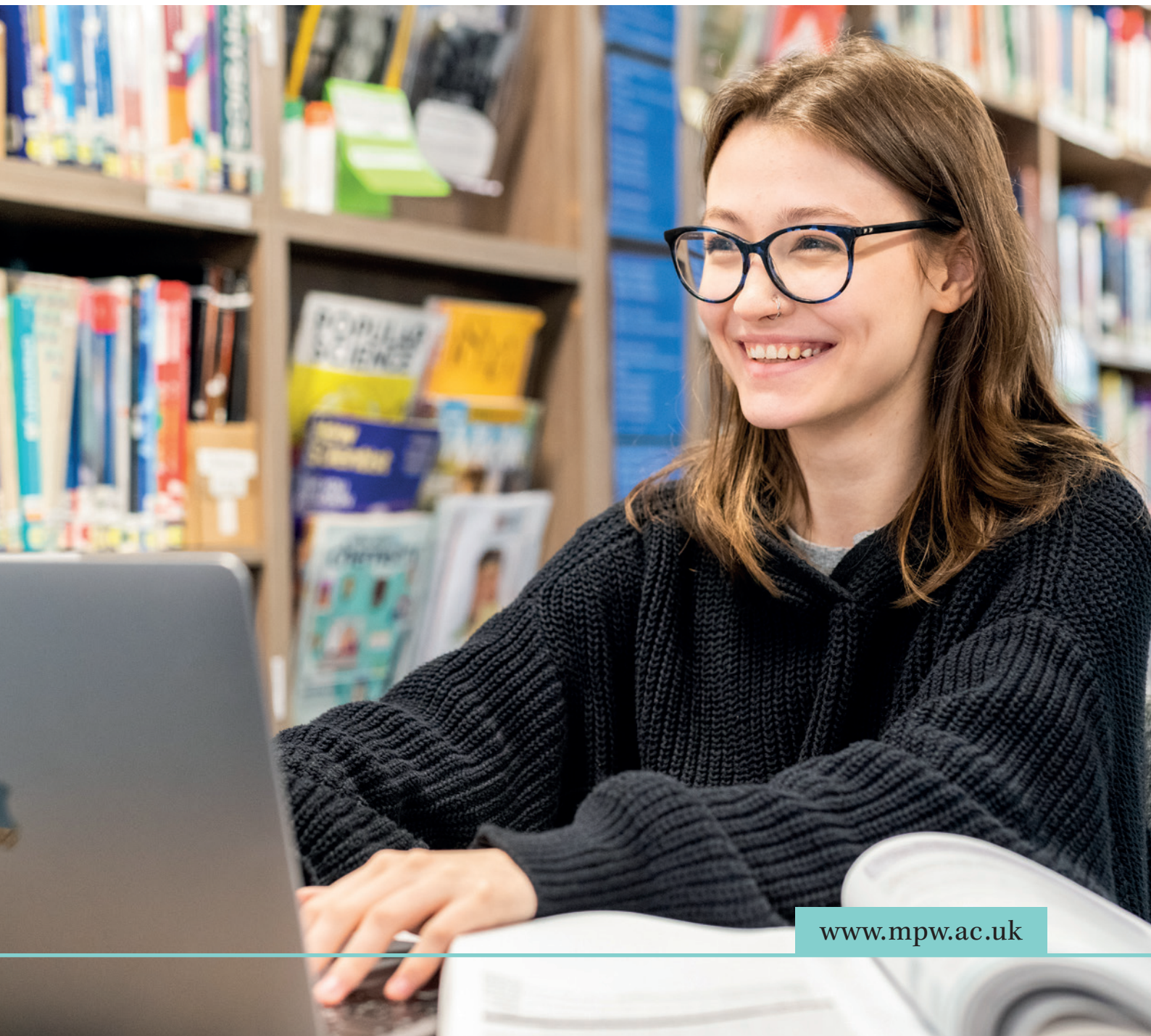
cambridge@mpw.ac.uk

www.mpw.ac.uk



Additional Information

2024/2025



MPW Birmingham – 2024/2025 Term Dates

Terms and Half Terms

Autumn Term	Tuesday 10 September – Friday 13 December 2024 (Half term: 28 October – 1 November 2024)
Spring Term	Monday 6 January – Friday 4 April 2025 (Half term: 17 February – 21 February 2025)
Summer Term	Monday 28 April – Friday 13 June 2025* (Half term: Bank Holidays 5 May and 26 May 2025)

Easter Revision Courses 2025

Week 1	Monday 7 April – Friday 11 April
Week 2	Monday 14 April – Friday 18 April
Week 3	Monday 21 April – Friday 25 April

(Good Friday is 18 April 2025; Easter Monday is 21 April 2025)

*Where examinations fall after this date we continue, when appropriate, to teach students up to their last examination paper.

2024/2025 Fees

A level Courses

Two-year courses	
First year of two-year courses	per term £8,529
Second year of two-year courses	per term £8,529

One-year courses

For one subject	per term £4,219
For two subjects	per term £8,437
For three subjects	per term £9,196

GCSE Courses

Integrated two-year course

Core curriculum	per term £6,130
-----------------	-----------------

One-year courses

For up to four GCSE subjects	per subject per term £1,813
For five or more GCSE subjects	per term £8,310

Other Fees

Individual tuition

	per hour £90
For programmes of more than six hours	per hour £78

English as an Additional Language (EAL)

per term £1,800

Registration fee

£350

There are no other fees except for the exam entry fees and, where appropriate, field trips.

Applicable taxes – All of the fees and supplemental charges are exclusive of any taxes, which will be added (where applicable).

Tailored, *not uniform*

**Our mission is to work with students to transform
academic aspirations into reality.**

Aims

Encourage students to have high academic aspirations

Work in partnership with parents to encourage a strong work ethic and the confidence and self-belief to achieve those aspirations

Provide a broad and flexible curriculum that allows bespoke programmes of study which reflect individual needs and allow students to cultivate their specific academic interests and aptitudes

Assist students in achieving high academic success through a combination of small class sizes, high quality teaching and a clear focus on learning outcomes

Provide an excellent system of pastoral support that is geared towards individual needs and recognises the personal and emotional challenges faced by 14 to 19 year olds

Enable students to make informed choices about educational progression in such a way as to maximise their chances of securing places on competitive and prestigious courses

Provide a friendly and informal environment in which students are encouraged to develop personal discipline and values, lead fulfilled lives and make a positive contribution to society

Chair of Governors: Steve Boyes BA MSc PGCE

Mander Portman Woodward Ltd 90-92 Queen's Gate, London SW7 5AB *Tel:* 020 7835 1355

