



---

# International Foundation Year

2024/2025

**NCUK**  
THE UNIVERSITY CONSORTIUM



[www.mpw.ac.uk](http://www.mpw.ac.uk)



## Welcome to MPW

Founded in 1973 by three University of Cambridge graduates, MPW is now one of the best-known and well-respected independent college groups in the UK. Our colleges, based in the heart of London, Birmingham and Cambridge, each offer the NCUK International Foundation Year (IFY) to enable international students to progress to top-ranked universities.

### Your Best Possible Start

The NCUK IFY is a modular programme that will prepare you for first-year entry to undergraduate degree courses. You will study a combination of modules that fit in with your degree destination. There are four pathways available:



Business



Humanities



Engineering



Science



Small class sizes  
(max 14 students)



Personal tuition and  
individual academic  
support



Experienced and highly  
qualified tutors



Academic environment  
focusing on university  
preparation and success



Exceptional pastoral  
support including  
extracurricular activities  
and a personal tutor  
system



Guaranteed progression  
to over 50 NCUK partner  
universities in the UK and  
internationally

All NCUK programmes also include a specialist English for Academic Purposes module designed to give you the language ability and study skills that will give you a head start on your undergraduate degree in the UK.

### Why choose MPW?

MPW is internationally renowned for the quality of its teaching and university progression. For 50 years, MPW has been helping students to gain places at the UK's top universities by providing intensive tuition in small groups, examination practice sessions, supervision by our Personal Tutors and lots of individual student support.

This means that studying a foundation programme at MPW is very different to studying at larger foundation providers or universities. Our highly personalised approach offers the most supportive setting for students studying in the UK for the first time allowing them to achieve their goals and ambitions.



## An Award-Winning, Accredited Partner

As a fully accredited NCUK Study Centre, MPW offers outstanding academic and social facilities, giving students access to a stimulating and safe learning environment. All of our staff are fully qualified and are experts in their field.



## Why study the NCUK International Foundation Year?

NCUK supports students worldwide in progressing to university and so far has helped over 40,000 students reach their chosen degree courses. NCUK is a consortium of leading universities with its pathway programmes enabling students to develop and gain the skills they need to succeed at university and in their career.

All NCUK qualifications are created in conjunction with its founding universities and all of them are designed to give you the skills you need to get your UK studies off to a flying start.

## Excellent University Progression, Guaranteed\*

Upon successful completion of the NCUK International Foundation Year, you are guaranteed access to an NCUK University which includes 30+ UK universities as well as 20+ universities located in Australia, New Zealand, the USA, Canada and more. No one else can offer you this guarantee. The entry criteria for each of these universities varies, so where you are placed will depend on how well you do in your exams. The better you perform, the greater chance you have of getting a place at your first choice! The minimum grades required in order to be eligible for the NCUK Guarantee are based on results in subject modules plus EAP (English for Academic Purposes) or Key Skills.

- Subject Module Grades: Students must normally achieve a minimum of 96 NCUK points in subject modules to progress to a university degree course in the UK
- EAP/EAPPU: All students must achieve a minimum of overall grade C with no less than D in each EAP skills component (Reading, Writing, Listening and Speaking)

*\*Some exclusions to the Guarantee apply for EU students and specialist medical courses. See the NCUK website for details, and for full information on minimum progression grades required.*



“The small class sizes and close-knit college allowed me to connect with others, make friends, and grow as an individual without feeling overwhelmed or distracted. I must give credit to the incredible system of personal tutors who provided unwavering support and guidance throughout my college journey, whether it was academic or extracurricular concerns. It made me feel secure and confident as I embarked on this new chapter of living alone in a foreign country thousands of miles away from home.”

**Bohdan**, from Ukraine. Achieved A\*A\*A\*, now reading IT Management for Business at the University of Manchester.

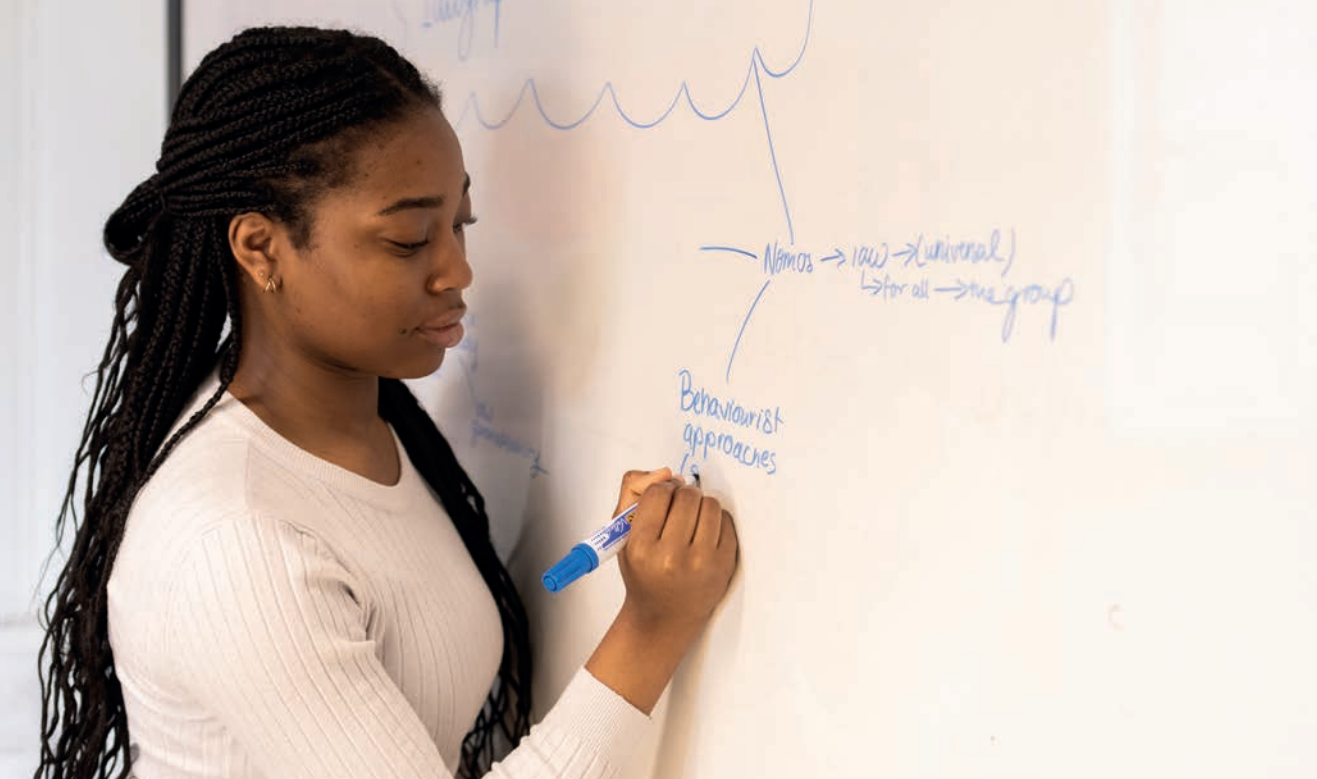
## NCUK Universities include:



NCUK students have also gained places at other prestigious universities, including (but not limited to):

- King's College London
- University of the Arts London
- University of Southampton
- University of Warwick





## Pathways

You can choose between Science, Business, Engineering and Humanities pathways and will study a combination of modules that fit in with your degree.

Each pathway consists of three academic modules related to your chosen pathway, plus a core module, English for Academic Purposes and Study Skills.

### Science

If you are interested in a Science degree you should follow the IFY Science pathway. This will provide the perfect preparation and access to wide range of science and medical related degrees through the addition of chemistry and biology module options. In addition, if you study the IFY Science pathway, you can also be placed on many of the same degrees as the Humanities, Engineering and the Business pathways.

The Science pathway can often lead to undergraduate degree programmes in areas such as:



Core module:	Academic modules:
English for Academic Purposes and Study Skills	Chemistry, Biology, Maths

(Many of the Business and Humanities degrees will also be open to students following this pathway)

### Business

This pathway prepares you in a variety of subject areas and offers a wide range of progression options, particularly suited to those seeking a career in business, finance and all areas of management. If you are interested in studying maths as one of your modules during your foundation year and want to keep your options open to both business and humanities degrees this would be the best pathway to follow.

Core module:	Academic modules:
English for Academic Purposes and Study Skills	Business Studies, Economics, Maths

(Many of the humanities degrees will also be open to students following this pathway)

The Business pathway can often lead to undergraduate degree programmes in areas such as:



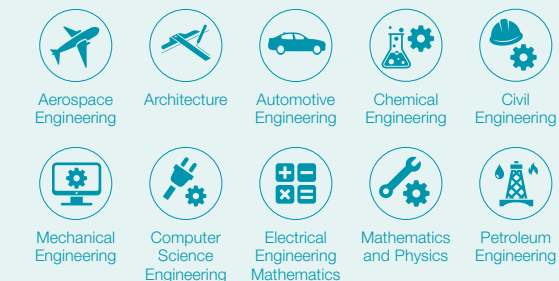
### Engineering

With maths and physics as compulsory modules this is the perfect route for those wishing to study Engineering related degrees at university. This pathway will give you access to virtually all Engineering degrees and keeps open the options of most Business and Humanities degrees.

Core module:	Academic modules:
English for Academic Purposes and Study Skills	Chemistry, Maths, Physics

(Many of the Business and Humanities degrees will also be open to students following this pathway)

The Engineering pathway can often lead to undergraduate degree programmes in areas such as:



### Humanities

An ideal pathway for those students wishing to access a wide range of degree programmes in the social sciences and humanities and specific areas such as law and international relations. This pathway is aimed at those not wishing to include maths as one of their modules, though many of the business and management degrees will be open as a future choice to graduates of this route.

Core module:	Academic modules:
English for Academic Purposes and Study Skills	Business Studies, Sociology, Economics

(Many of the Business degrees will also be open to students following this pathway)

The Humanities pathway can often lead to undergraduate degree programmes in areas such as:







## Module Outlines

### Core Module

#### English for Academic Purposes and Study Skills

All NCUK programmes include a specialist English for Academic Purposes (EAP) module designed to give you the language ability and study skills that will give you a head start on your undergraduate degree in the UK. It prepares you for success at a UK university by improving your reading, writing, listening and speaking – concentrating on building up your academic vocabulary and independent study skills. The course uses real university coursework and reading material as a core element of your teaching. Learn how to use word processing, spreadsheet, database and presentation software, as well as using virtual learning environment (VLE) software.

### Academic Modules

Alongside the EAP you will study three additional modules directly related to your chosen pathway. All modules give the student a firm grounding in many aspects of the subject at a level equivalent to A level and will enable students to feel confident in commencing related subjects at undergraduate level. Core topics studied are listed below:

#### Biology

Structure and function of biological molecules, organs, tissues, cellular organisation and cell structure; plant structure and photosynthesis; cell membrane structure and transport; molecular genetics - DNA replication and protein synthesis, cellular reproduction; physiological systems; homeostasis; interpretation of scientific data.

#### Business Studies

Marketing - the nature of marketing, market analysis, segmentation and positioning, market research, marketing strategy, the marketing mix; accounting and finance; human resources - organisational structure and design, motivation; leadership and management styles; business and the legal environment; fundamentals of management - strategy and objectives.

### Chemistry

Atomic structure and mass; chemical bonding; metallic bonding; hydrogen bonding and simple intermolecular forces; molarity and balanced equations; empirical and molecular formulae; oxidation and reduction; transition elements; alkanes and alkenes; alcohols; aldehydes and ketones; energetics and equilibrium; kinetics; spectroscopy.

### Economics

Micro economics - economic systems, demand, supply and market price, business economics. Macro economics - the main objectives of government economic policy, economic growth, taxation and government spending, money and monetary policy, inflation and unemployment, trade policy.

### Maths

Algebra; binomial expansions; trigonometric functions; laws of indices; exponential function; calculus; statistics; trigonometric identities; functions, probability and set theory; correlation and linear regression; probability distributions; further integration.

### Physics

Mechanics; electricity; vibrations and waves; thermal physics; nuclear physics; fields. The following major topics, which would normally be taught in a Physics A level, are not covered: first and second laws of thermodynamics; optional topics such as astrophysics, medical physics, particle physics and electronics. These topics are adequately introduced in relevant undergraduate courses in NCUK partner universities if required, and assume no prior knowledge.

### Sociology

Introducing sociology; research methods; stratification - social class, wealth and poverty; globalisation; democracy; participation and ideologies; British government; society; politics and the environment.

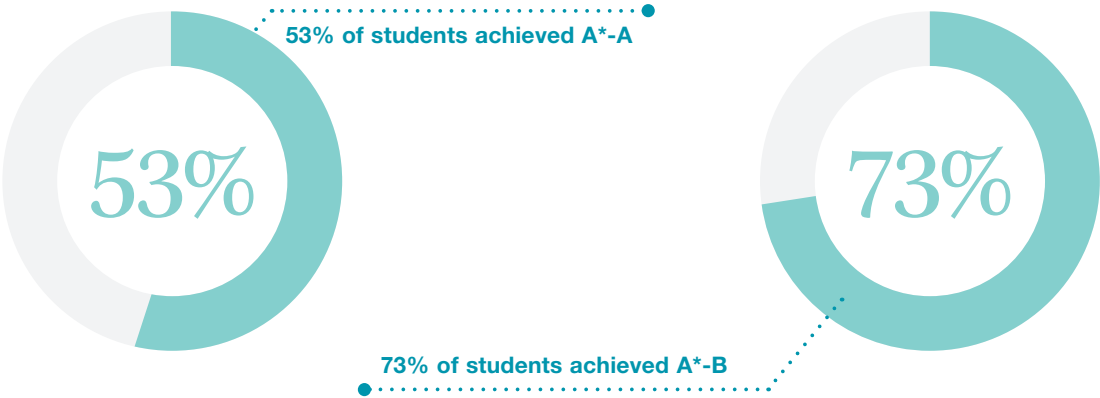


# Results and Destinations

MPW’s students consistently achieve incredible success and our NCUK graduates from 2023 are no different.

After an intensive year of adjusting to life in the UK and a new academically intensive curriculum our students were rewarded with an excellent set of results and university placements.

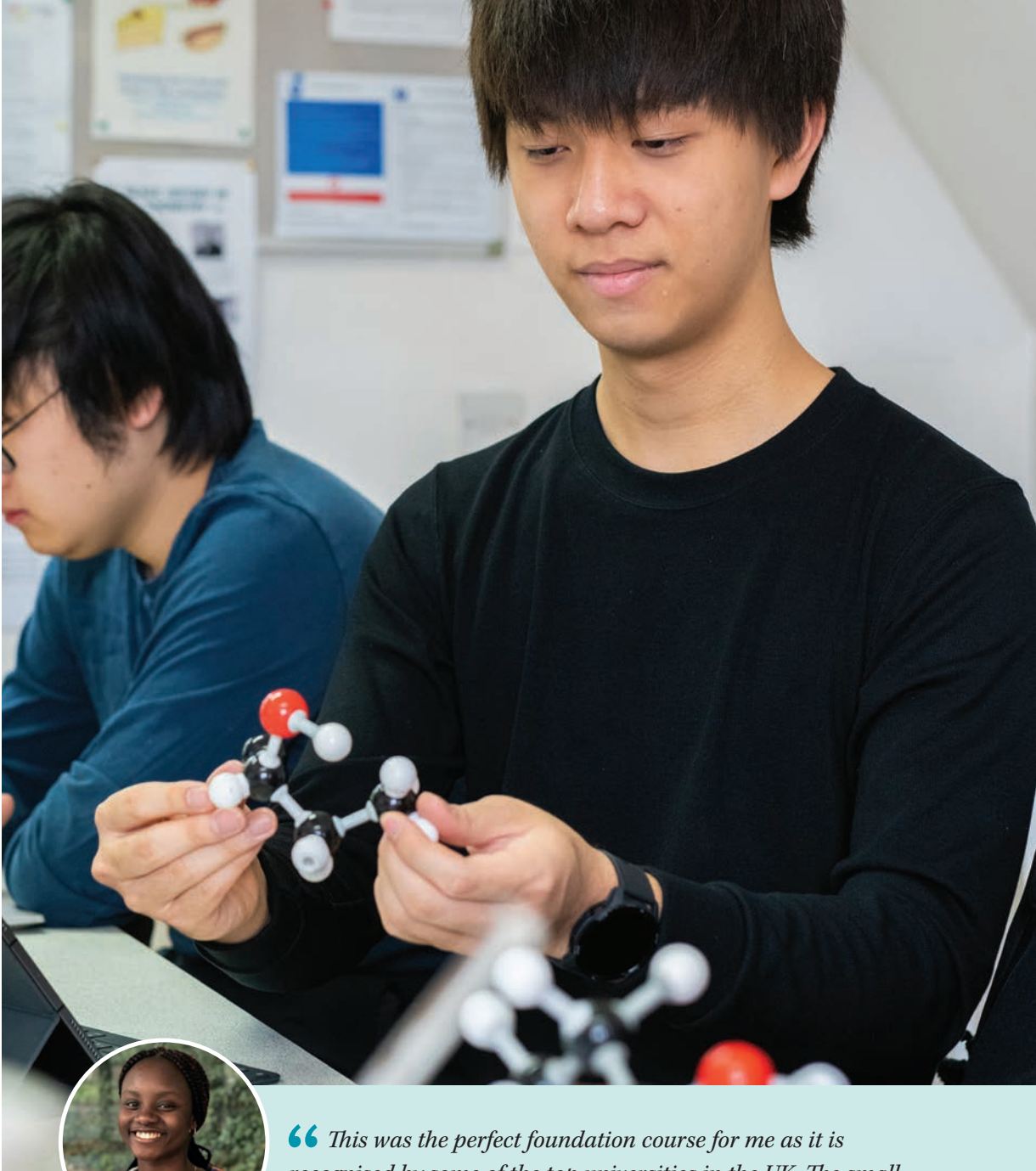
NCUK is extremely proud of its long history, and the achievements of the students who they have helped to realise their ambitions. You can be sure that if you study the NCUK International Foundation Year at MPW, you have the very best chance of getting into your chosen university.



## Progression to the best universities

Destination universities for 2023 included:

Name	Nationality	Grades	University	Degree
Bohdan	Ukrainian	A*A*A*A*	University of Manchester	Information Technology Management for Business
Azeemah	Nigerian	AAA*A*	University of Warwick	Law
Hithrisha	Malaysian	A*A*A*A*	The University of Bristol	Physiological Science
Pryn	Thai	A*A*A*A	University of York	Actuarial Science
Kiu-Chun (Michael)	Macao (SAR)	A*AAA	University of Manchester	Fashion Management
Anna	German	A*A*A*A*	University of Marburg, Germany	Medicine



“ This was the perfect foundation course for me as it is recognised by some of the top universities in the UK. The small number of students in each class made it easier to engage with the teachers and with the other students. The teachers are very dedicated and supportive - they took us through our coursework step by step to ensure that we got fantastic grades. ”

Eseose, from Nigeria. Achieved A\*BA\*-A\*, now studying Computer Systems Engineering at the University of Sheffield.



# Our Colleges

## MPW London

MPW London is located in South Kensington (Zone 1), one of the most exclusive and affluent parts of the capital. The college is just a few minutes' walk from Hyde Park, Imperial College and many world-famous museums, including the Science Museum, the Natural History Museum and the Victoria & Albert Museum.

## MPW Birmingham

Home to five universities and two university colleges, Birmingham is the UK's second largest student city, with nearly 40% of its population under 25. MPW Birmingham is situated in the leafy suburb of Edgbaston, a short walk from Five Ways train station, the energetic city centre and the University of Birmingham campus. MPW students have easy access to the full range of world-class facilities that this exciting city has to offer.

## MPW Cambridge

Cambridge is home to many beautiful museums and art galleries as well as the world-famous University of Cambridge. MPW Cambridge is located in the heart of the city, next door to the University of Cambridge Botanic Gardens as well as the University's Engineering and Chemistry faculties. It is within a few minutes' walk of many world-famous university buildings, including King's College and The Fitzwilliam Museum.



# Accommodation

Kensington Student Services (KSS), a wholly owned subsidiary of MPW, provides students with a home away from home. Its comfortable, fully supervised student residences are offered exclusively to students studying at all three of our colleges.

KSS takes pride in offering much more than just a room. Its friendly and experienced team cultivate a sense of community and belonging, as well as helping students to develop life skills and transition to independent living.

## London

KSS offers a number of attractive and convenient residences for students studying at MPW London, including IQ Hammersmith, one of the best student accommodation options in Central London. IQ, based in a vibrant area of West London, boasts spacious, self-contained studios, with access to fantastic shared social spaces including a gym, cinema and games room.

## Birmingham

Situated next door to MPW Birmingham, Greenfield Crescent lies in the heart of the newly regenerated Edgbaston Village, close to its many cafés, shops, restaurants and leisure facilities. Students can choose between standard rooms with shared shower facilities, ensuite rooms with their own shower, or fully self-contained studio flats.

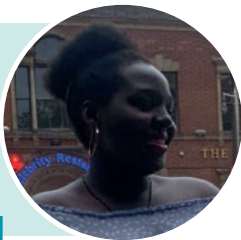
## Cambridge

Students at MPW Cambridge can choose between two fantastic student residences, both a short walk from the college. Tripos Court is a gated, purpose-built student accommodation block, where residents enjoy ensuite rooms and superb social spaces.

Malta Road comprises a row of pretty terraced houses, which provide a homely atmosphere, close to the desirable Mill Road area of Cambridge.

“MPW seemed to be a place that would be a home away from home which it has truly been. The small group classes were amazing for me as I've had more interaction with my teachers.”

Agatha, from Uganda. Achieved AA\*A\*-A.  
Now reading Biochemistry at the University of Birmingham.





# Entry Requirements



## Key Facts



Age:  
17+



Programme length:  
2 or 3 terms



Start date:  
September or January



Course hours:  
21 or 28 hours per week

\*The 2 term, January start format is available at MPW Birmingham only.

## Academic Entry Requirements

- Completion of 12 years of schooling (or local equivalent to meet the same standard) with good grades
- English Language Level (September start): IELTS 5.5 or equivalent (with no less than 5.0 in any single band)
- English Language Level (January start): IELTS 6.0 or equivalent (with no less than 5.5 in any single band)
- If you are applying for a visa you must have an IELTS for UKVI to apply

## Fees

- MPW London: £30,700
  - MPW Birmingham: £22,450 (2 or 3 term option)
  - MPW Cambridge: £24,950
- Fees include all NCUK registration fees including exams and placement support.

# How to Apply

MPW provides a high level of support to agents and students throughout the admissions procedure. All students are interviewed either in person or via video call by a senior member of MPW staff.

## The Admissions Procedure

1. Complete application form and return with supporting documentation:
  - Copy of passport and previous UK visa(s)
  - Copy of any English language qualifications
  - Copies of previous school qualifications/ reports/transcripts
2. Attend an interview with a senior member of MPW staff and sit an entrance test if required. During the interview we will offer expert and honest advice on programme/subject selection and making a competitive university application. A student may be required to sit an English or Maths test depending on their qualifications and the course they are applying for. An interview may take place at an MPW college, in-country when we are visiting your region or via video call.
3. Receive a decision on the application (usually within one week).

## If a place has been offered

4. Complete and return registration form, consent form and registration fee (£350) to guarantee a place.
5. Pay a deposit (held against the last term's fees or to be credited back on completion of the course).
6. If the student requires a visa, a Confirmation of Acceptance for Studies (CAS) will be issued once the deposit has been received (we are not able to issue a CAS more than six months before the course start date).







### *London*

90-92 Queen's Gate  
London SW7 5AB

### *Birmingham*

16-18 Greenfield Crescent  
Birmingham B15 3AU

### *Cambridge*

3-4 Brookside  
Cambridge CB2 1JE



+44 (0)20 7835 1355



[international@mpw.ac.uk](mailto:international@mpw.ac.uk)



[www.mpw.ac.uk](http://www.mpw.ac.uk)



[/MPWInternational](https://www.facebook.com/MPWInternational)



[/mpw\\_international](https://www.instagram.com/mpw_international)



[/mpwintl](https://twitter.com/mpwintl)



[/school/mander-portman-woodward-limited](https://www.linkedin.com/school/mander-portman-woodward-limited)